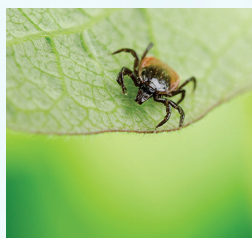


# The NorVect Conference 2015

Connecting the Dots on Vector-borne Diseases



## **“Connecting the dots” is defined as:**

*“To draw a line between all the dots until the outline of an image is revealed”*

*“The ability to associate one idea with another to see the bigger picture”*

Vector-borne diseases continue to puzzle researchers and clinicians world-wide. Amongst the most known of these, Lyme Borreliosis, is now considered an epidemic in many countries. What so many clinicians fail to see is that Lyme disease is only one piece in a bigger picture. It is therefore important to look beyond Lyme disease to understand why patients do not get well.

Lyme Borreliosis is often followed by a number of other infections, often referred to as co-infections (such as Bartonellosis, Babesiosis, Ehrlichiosis and Mycoplasmosis). Diagnostic tools frequently fail to uncover these infections, and many doctors are not familiar with the clinical picture of overlapping symptoms that these infections often entail. Moreover, patients who go undiagnosed and untreated for years may also develop chronic complaints and disabling conditions. Examples are hormonal, gastrointestinal, mitochondrial, autoimmune and psychiatric conditions that require extra support and specialized treatments.

Accordingly, understanding vector-transmitted diseases requires the uncovering and linkage of many small pieces in a greater puzzle. It requires creativity, curiosity and knowledge to connect all the dots. As the field of medicine constantly discovers new truths and discards existing doctrines, NorVect believes it is important to look beyond established knowledge, and connect the dots we don't yet see. This will be the objective of The NorVect Conference 2015.

## **Call for Abstracts**

Researchers interested in vector-borne diseases are invited to submit an abstract to the NorVect Conference 2015. Abstract submission deadline: February 28th, 2015

[● CLICK HERE TO SEND ABSTRACT](#)

**The conference is open to medical professionals, and others with interest in vector-borne diseases.**

**Place: Scandic Fornebu Hotel, Oslo, Norway**

**Time: May 30th - May 31st 2015**

**Limited space, register now!**

[● CLICK HERE FOR REGISTRATION](#)

**[www.norvect.no](http://www.norvect.no)**

## Connecting the dots

“Science is about connecting the dots.

If you only connect the dots you see,

and miss the ones you don't see,

you end up with linear solutions

without a broader perspective on the problem.”

- anonymous

See next page for speakers ►



## SPEAKERS:

### Armin Alaedini, Ph.D

Ass. Prof. of Medical Sciences, Dep. of Medicine, Columbia University.

*Expertise: Immune mechanisms in Lyme disease, celiac disease, schizophrenia, and autism.*

### Gad Baneth, DVM, Ph.D, Dipl. ECVCP

Prof. of Veterinary Parasitology and Infectious Diseases, School of Veterinary Medicine, Hebrew University, Israel.

*Expertise: Pathogenesis, diagnosis and treatment of veterinary and zoonotic vector-borne infectious diseases.*

### Daniel Cameron, MD, MPH

Dr. Daniel Cameron & Associates, Mount Kisco, New York, President of ILADS.

*Expertise: Nationally recognized leader for his expertise in the diagnosis and treatment of tick-borne illnesses.*

### Brian A. Fallon, MD, MPH, MED

Director of The Lyme and Tick-Borne Diseases Research Center, Columbia University.

*Expertise: Neuroinflammatory Disorders, Biobehavioral Medicine, research on neuropsychiatric Lyme disease.*

### Volkhard Kempf, Ph.D, MD

Director of The Institute for Medical Microbiology and Infection control, Johann Wolfgang Goethe-Universität, Frankfurt am Main.

*Expertise: Bacterial pathogenicity and resistance and hypoxic host cell events in infections. Specialization: Bartonella.*

### B. Robert Mozayeni, MD

Private practice in Bethesda, Maryland. Chief medical doctor, Galaxy Diagnostics.

*Expertise: Chronic inflammatory diseases with rheumatic and neurovascular manifestations. Specialization: Bartonella.*

### Neil Nathan, MD

Medical doctor, Gordon Medical Associates, California.

*Expertise: Chronic, complex illnesses including Lyme Disease, Mold Toxicity, Fibromyalgia, Chronic Fatigue Syndrome, Autism.*

### Garth L. Nicolson, Ph.D

President, Chief Scientific Officer and Research Prof. of Molecular Pathology at The Institute for Molecular Medicine, California.

*Expertise: Cancer biology, Molecular Medicine, Chronic Infectious Diseases, ME/CFS.*

### Steven Phillips, MD

Medical Doctor, Yale University. Currently in private practice, Connecticut.

*Expertise: Diagnosis and treatment of Lyme disease and co-infections.*

### Armin Schwarzbach, Ph.D, MD

Co-founder and CEO, Borreliose Centrum Augsburg and Infectolab.

*Expertise: Laboratory medicine. Diagnostics and treatment of tick-borne diseases.*

### Raphael B. Stricker, MD

Medical Director, Union Square Medical Associates, San Francisco.

*Expertise: coagulation disorders, emerging infectious diseases, immunodeficiency, immunologic infertility, and tick-borne diseases.*

### Ying Zhang, Ph.D, MD

Dep. of Molecular Microbiology and Immunology, Johns Hopkins Bloomberg School of Public Health, Baltimore.

*Expertise: Bacterial persistence, antibiotic resistance, and pathogenesis, and translation of research findings into improved disease control.*

