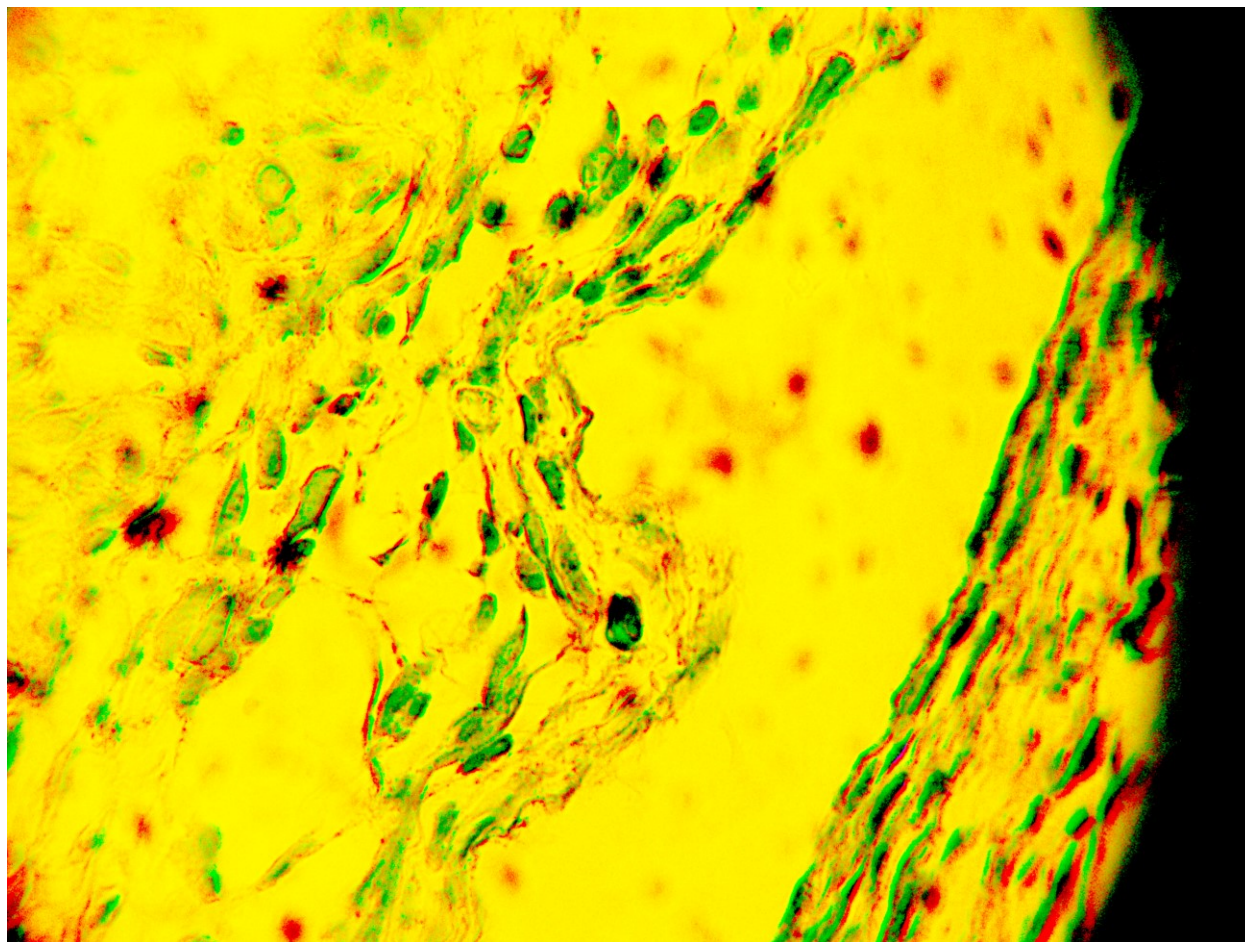


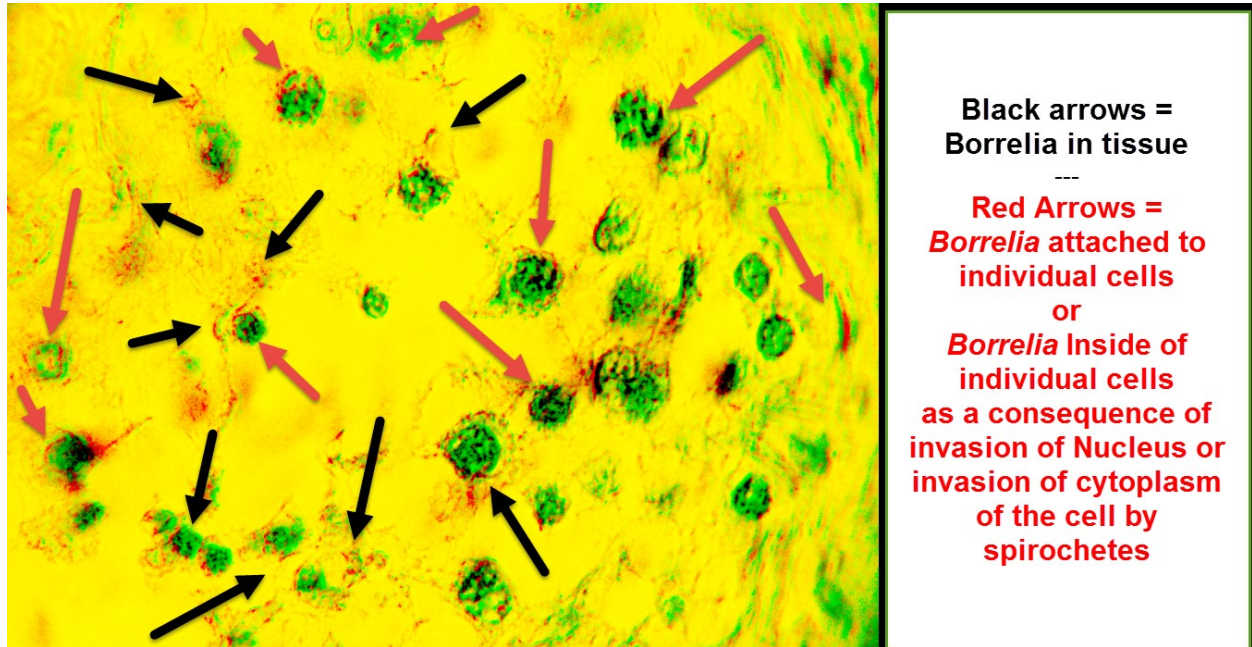
Testicle from Autopsy – Adult Male- Duluth Minnesota- Long Term Chronic Lyme Disease- FISG study Positive by MacDonald – Additional Immunostain study using Immunoperoxidase Antibodies to ***Borrelia Burgdorferi*** – labeled with Chromogen AEC (red)- Positive for *Borrelia Burgdorferi* in Autopsy Testicle in High Density – Compelling Evidence for Sexual Transmission Of borrelia infection between human conjugal partners from Infected Male genital secretions- Independent of evidence in individual spermatozoa.

Control Slide (positive) : Immunoperoxidase for borrelia Burgdorferi ( spirochetes in Red)



Testicle from Autopsy – Adult Male- Duluth Minnesota- Long Term Chronic Lyme Disease- FISG study Positive by MacDonald – Additional Immunostain study using Immunoperoxidase Antibodies to ***Borrelia Burgdorferi*** – labeled with Chromogen AEC (red)- Positive for *Borrelia Burgdorferi* in Autopsy Testicle in High Density – Compelling Evidence for Sexual Transmission Of *borrelia* infection between human conjugal partners from Infected Male genital secretions- Independent of evidence in individual spermatozoa.

Patient : Testicle: Autopsy: Immunostain with annotations for borrelia in Image



Respectfully Submitted,

Alan B. MacDonald, MD,

Fellow, College of American Pathologists

November11,2015